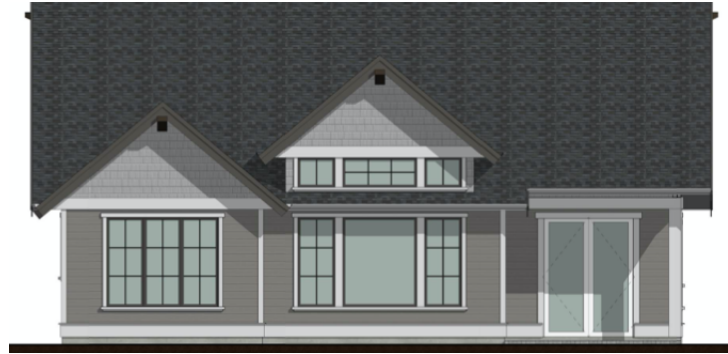


1314 Parkhurst Place



Interior

- 1,637 sqft
- 3 bedrooms , 2 bathrooms
- Large kitchen
- Oversized island with extra storage
- Quartz countertops in kitchen and bathrooms
- Merit maple soft-close cabinets & drawers
- Pantry
- Subway tile backsplash
- Under cabinet lighting
- Cozy gas fireplace
- Private master suite with walk in closet
- Vaulted ceiling in master bedroom
- Oversized tiled shower
- Heated ceramic tile in ensuite
- Engineered hardwood flooring
- Closet organizers
- Elegant lighting fixtures throughout
- Heated crawl space
- Sound buffering insulation in bedroom and kitchen walls
- 20' x 20' two car garage
- Garage door remotes + keypad entry



Exterior

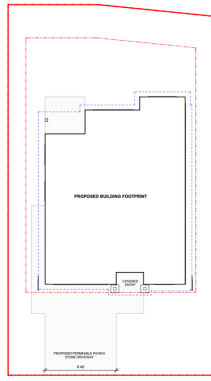
- 6,617 sqft lot
- Bright private backyard
- Concrete patio
- Easy care hardi-plank siding
- Fenced

Mechanical

- On demand hot water tank
- Gas forced air furnace & A/C Unit
- HRV - Heat Recovery Ventilator
- Digital Wifi enabled thermostat
- Gas fireplace
- Central vacuum roughed in

\$764,000 +GST

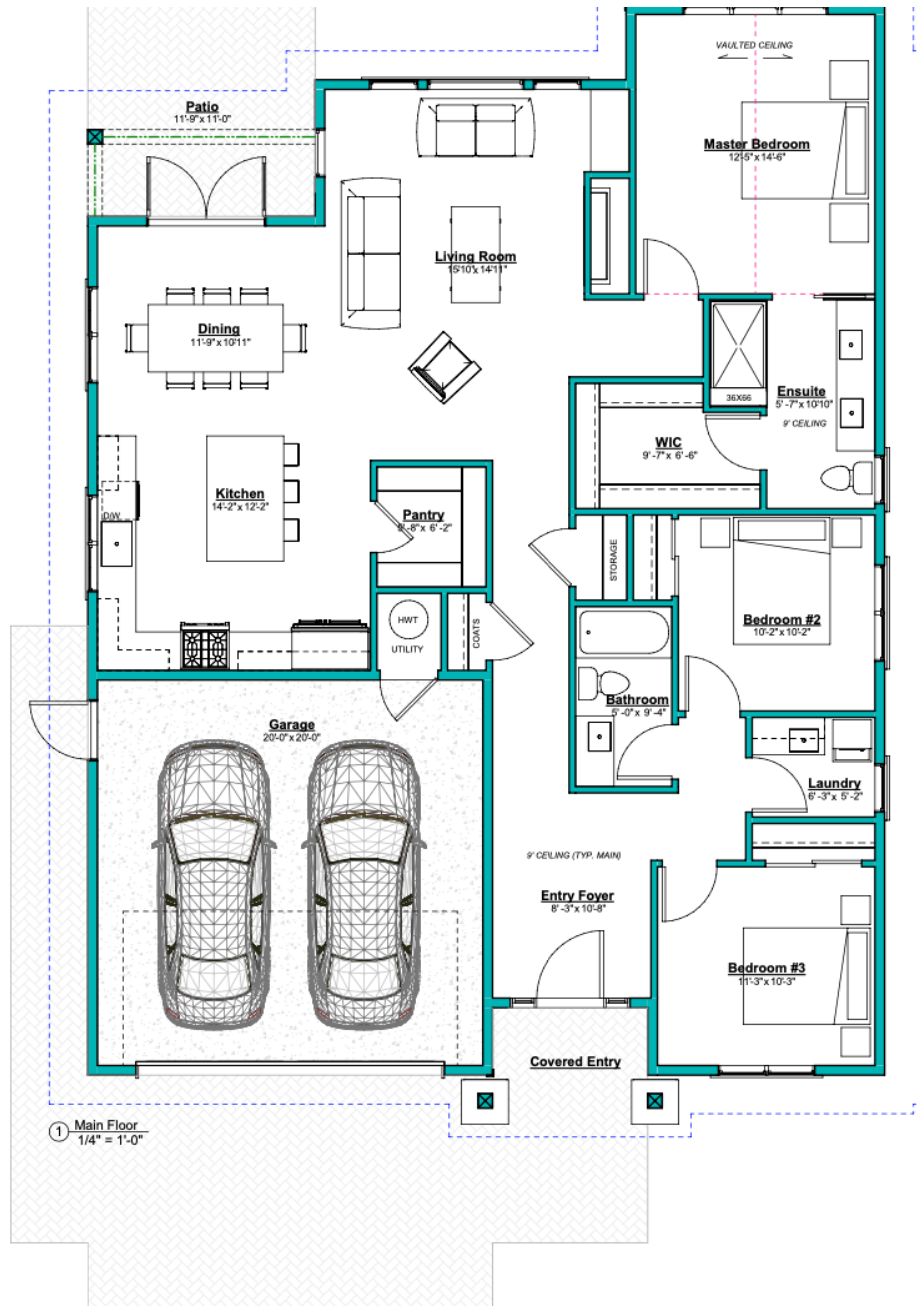
- LOT LAYOUT -
6,617 SQFT



11-10-100 PARKHURST PLACE

1314 Parkhurst Place

- MAIN -
1,637 sqft



All measurements are approximate and should be verified by the buyer
Changes may occur during construction at the discretion of the Builder



Parkhurst Place is a premier 18 home subdivision at the south end of Parksville, nestled next to Craig Bay. This prime location means that Parkhurst has something for everyone right at your doorstep: grab a coffee at the local coffee shop, enjoy the restaurants, attractions and spa along Resort Drive, hike the Englishman River trail, or stroll down the tranquil arbutus-lined trail towards sandy beaches and spectacular sunsets.



For more information call or text:
Melissa Tracey - 250-951-6654

ROYAL LEPAGE
 Parksville-Qualicum Beach Realty
INDEPENDENTLY OWNED AND OPERATED


Oceanside Life
 REAL ESTATE GROUP